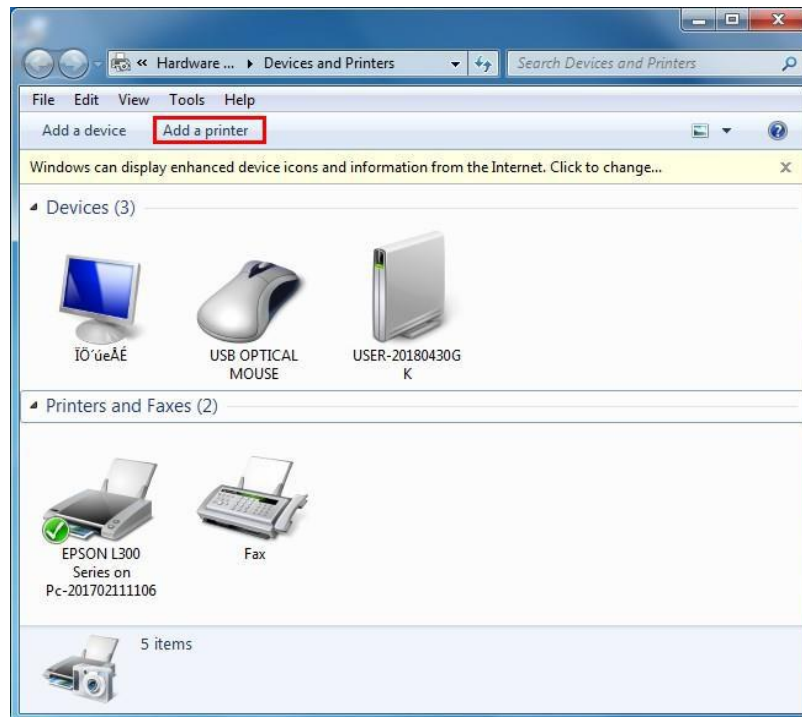


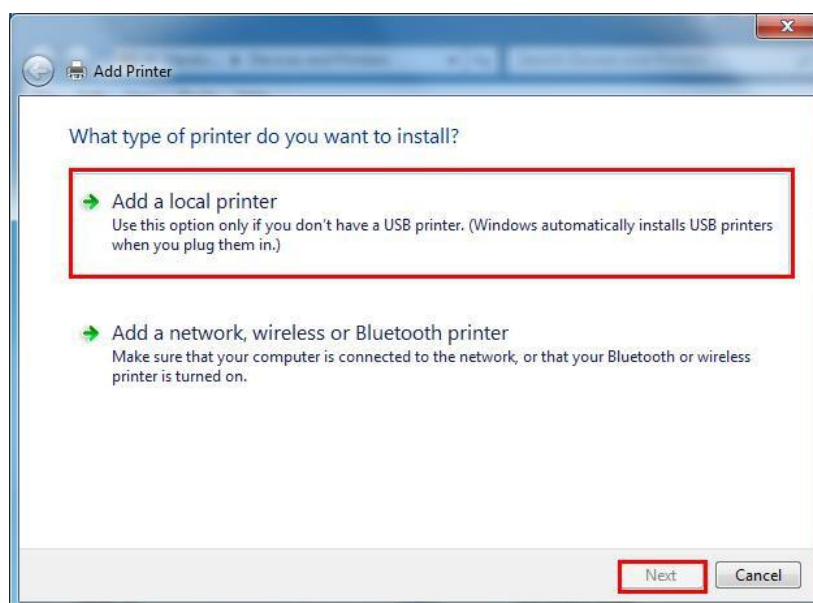
Method to add a new printer

Problems may happen during installation, please follow below steps to add a printer when you can not see driver icon shown on devices and printers

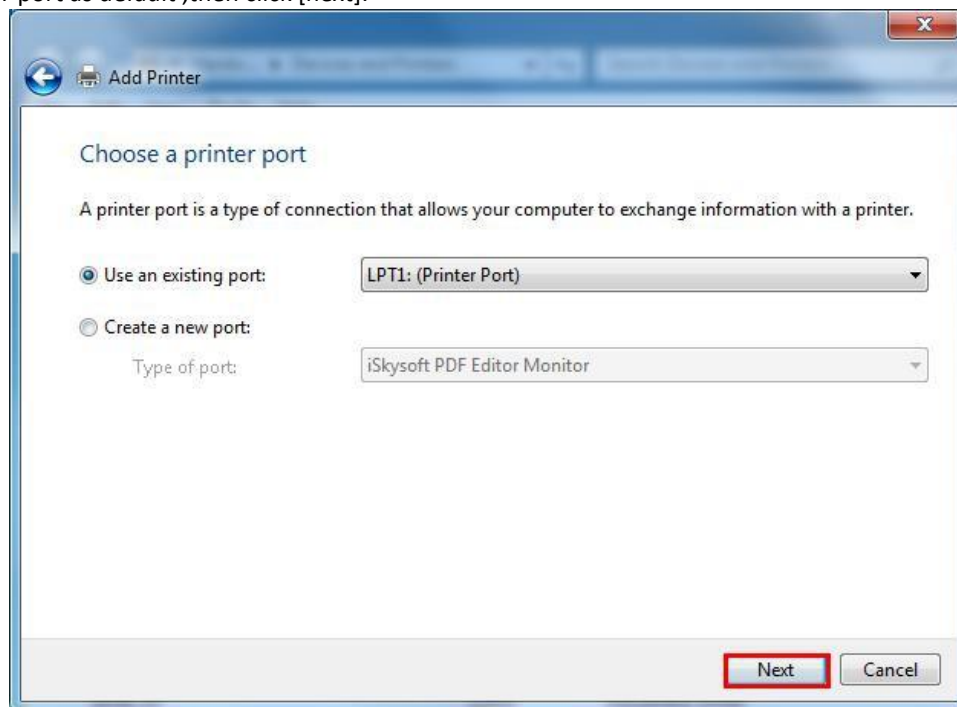
1、 Open devices and printers



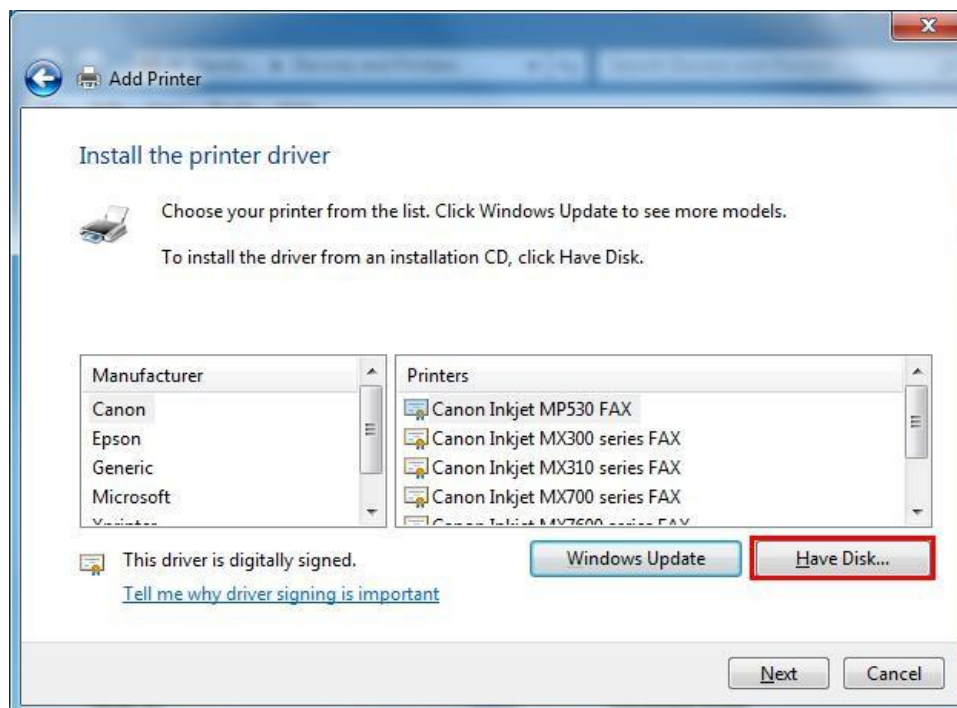
2、 Click into [add printer], click [Add local printer] then [next]



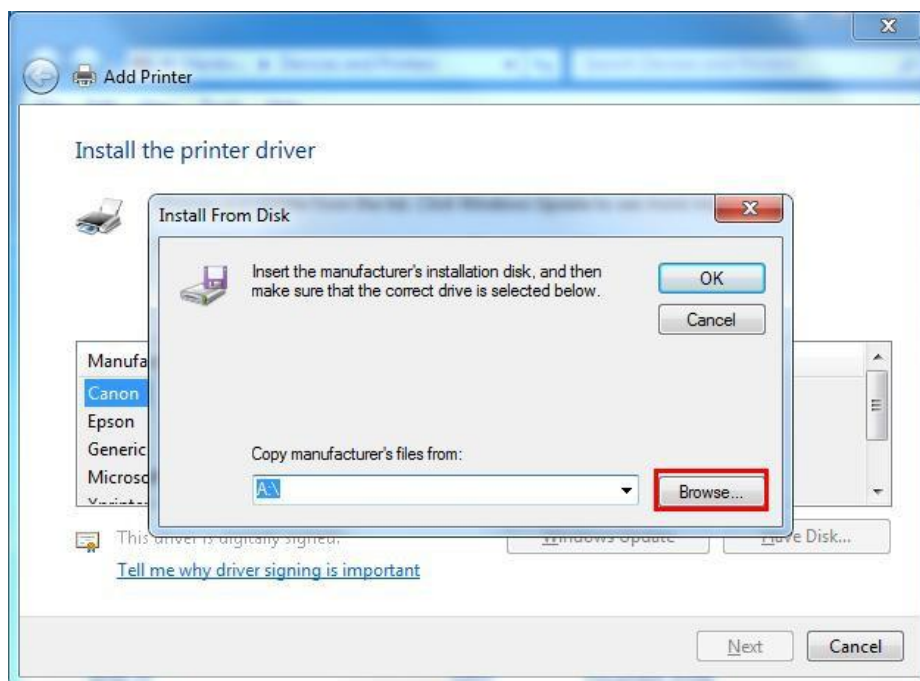
3、 Choose LPT port as default ,then click [next].



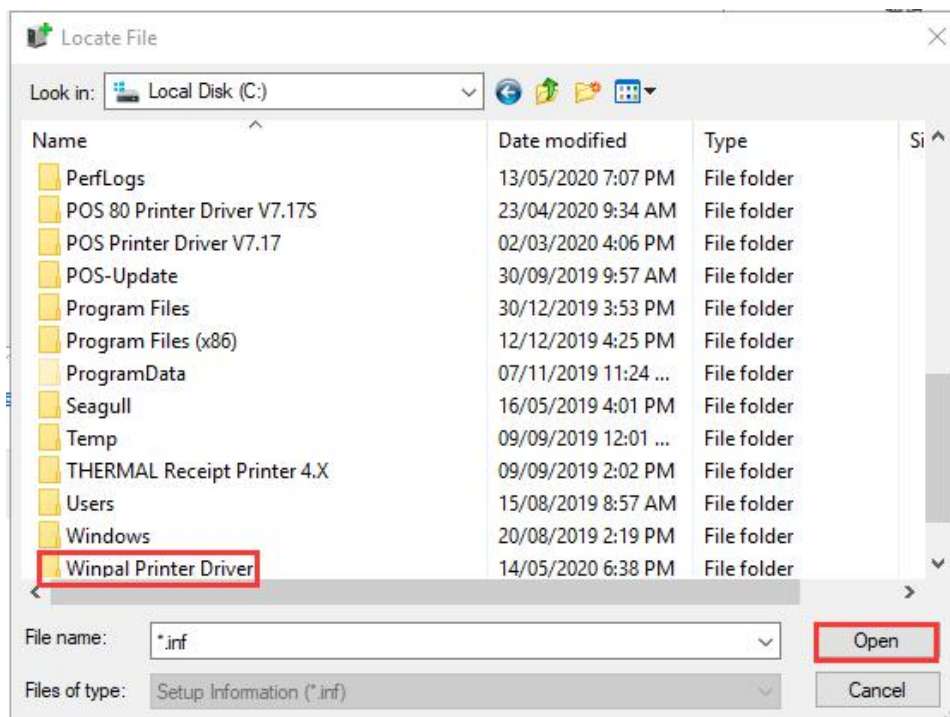
4、 Install driver from Have Disk.



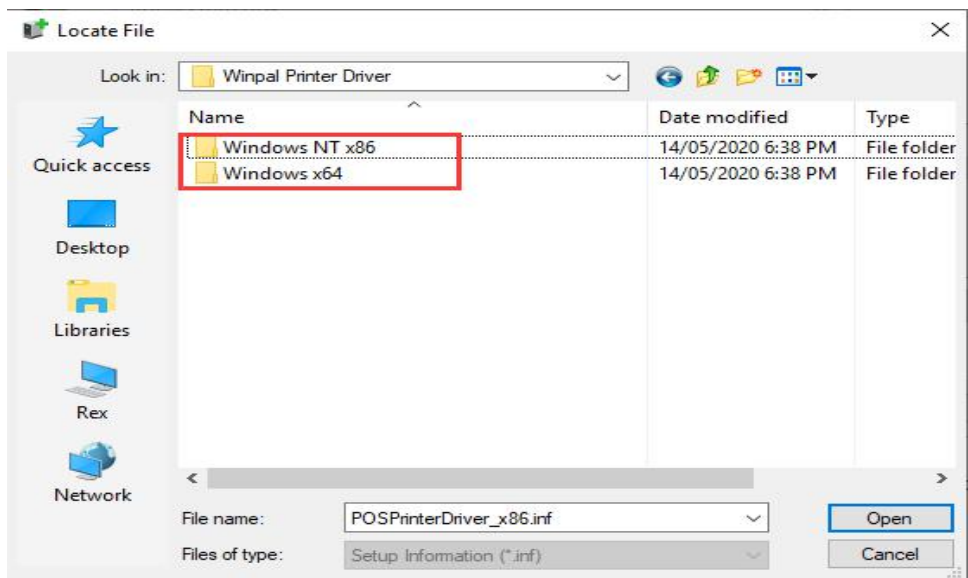
5、 Browse C driver as below.



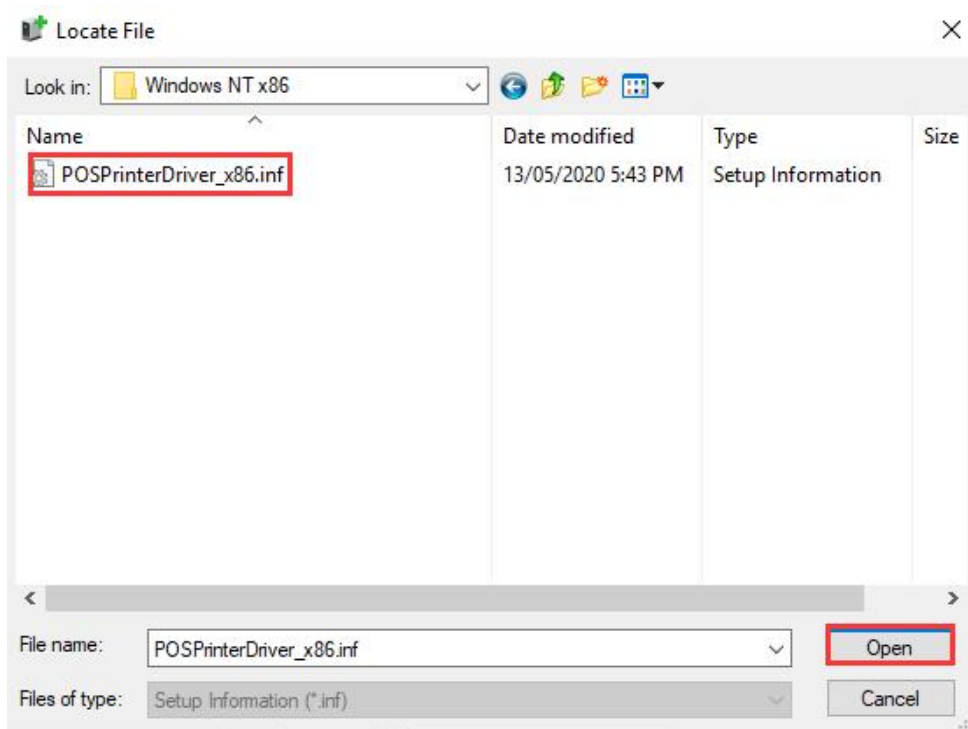
6 、 Find out file folder name POS PRINTER DRIVER in My Computer C: driver



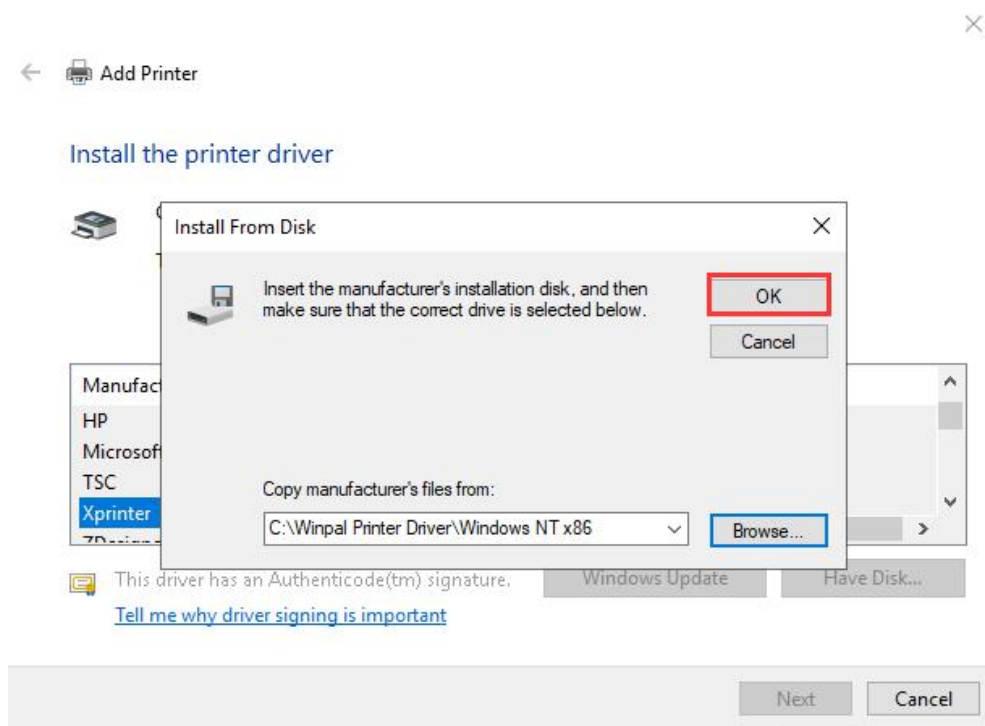
7、 Choose a right system,32-bit or 64-bit.



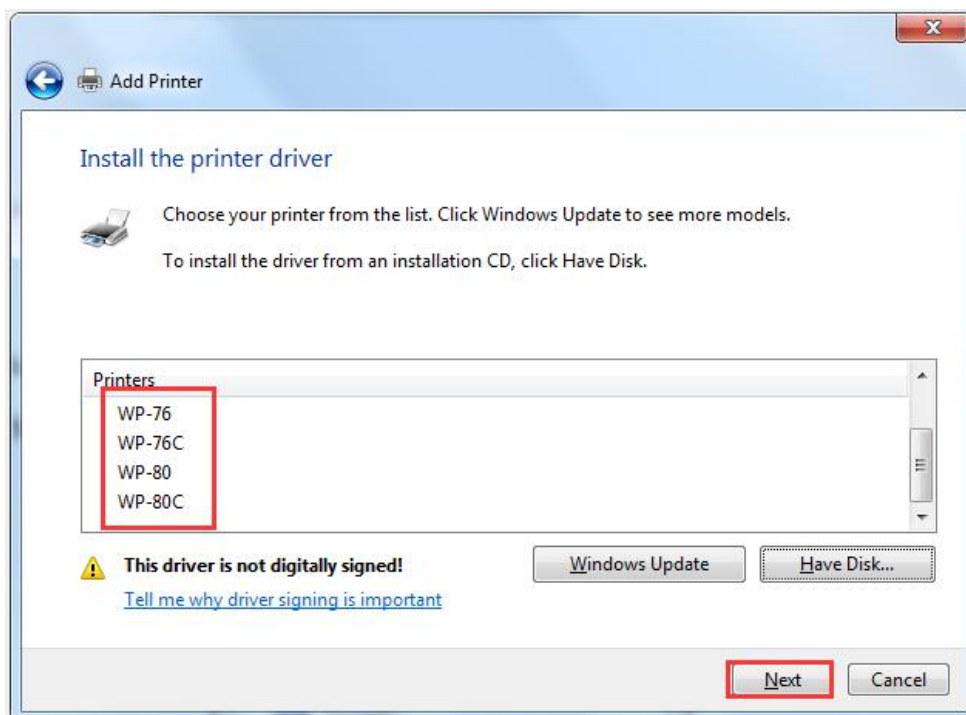
8、 Choose INF file.



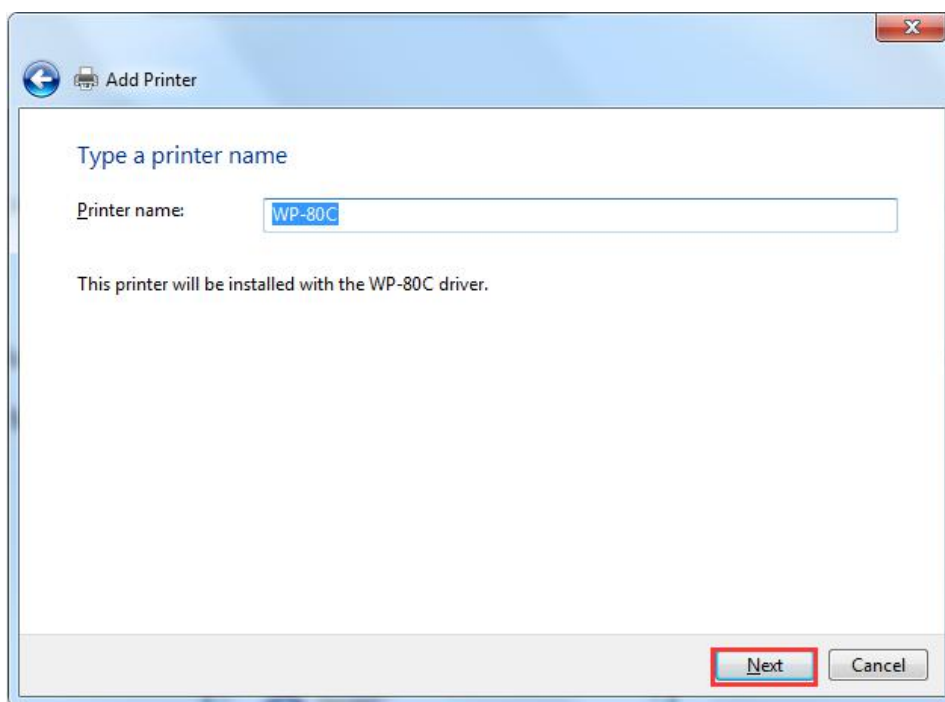
9、Choose [OK].



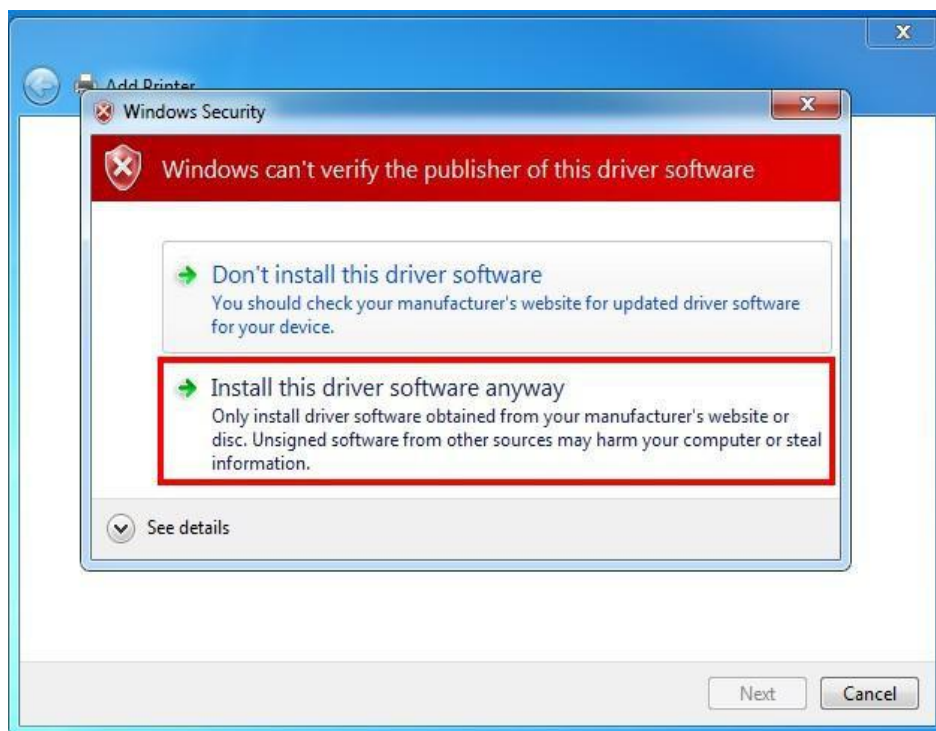
10、Choose a corresponding printer type, then click [next].



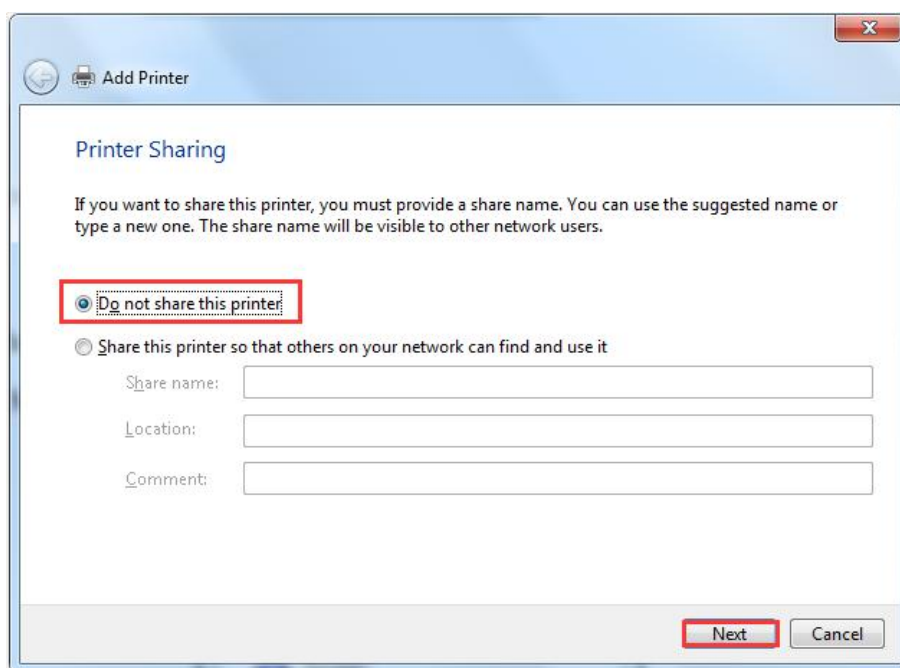
11、Click [next].



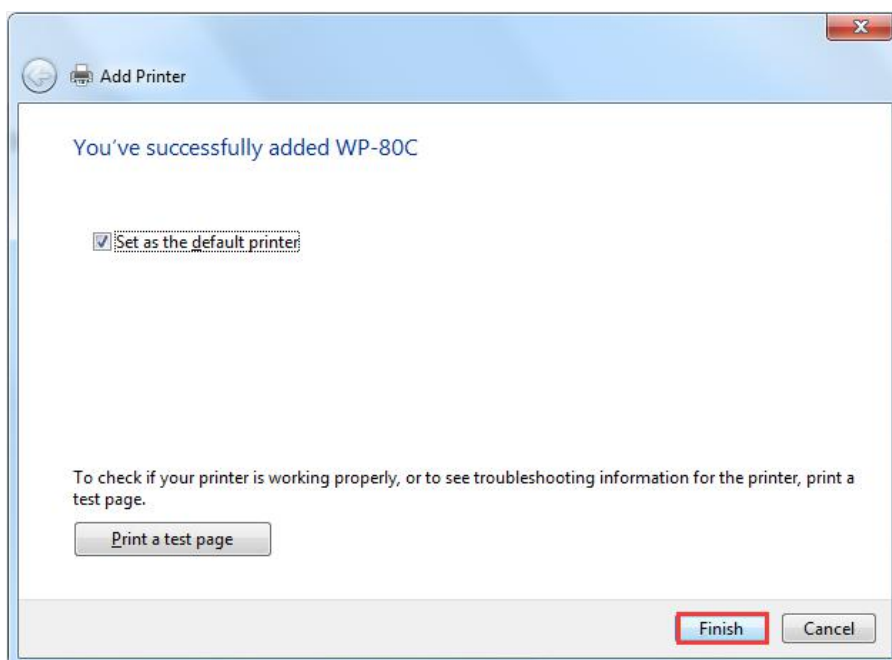
12、Choose "Install this driver software anyway"



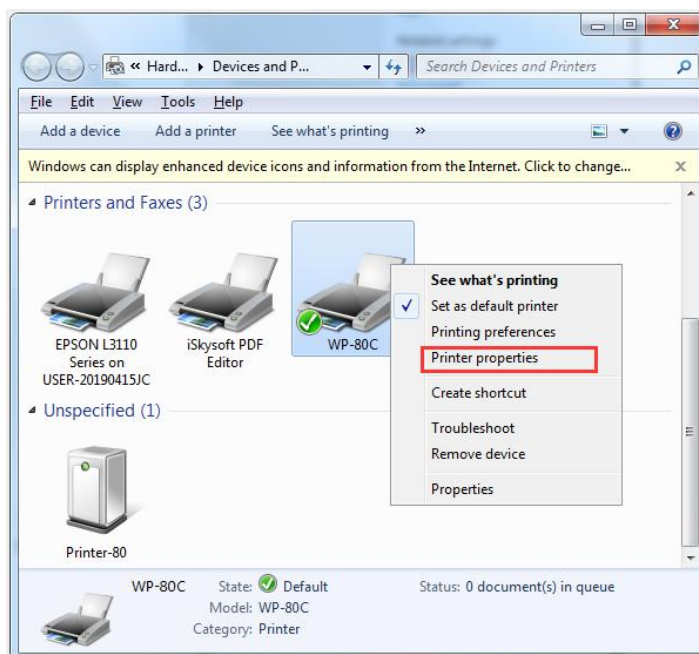
13、Click [next].



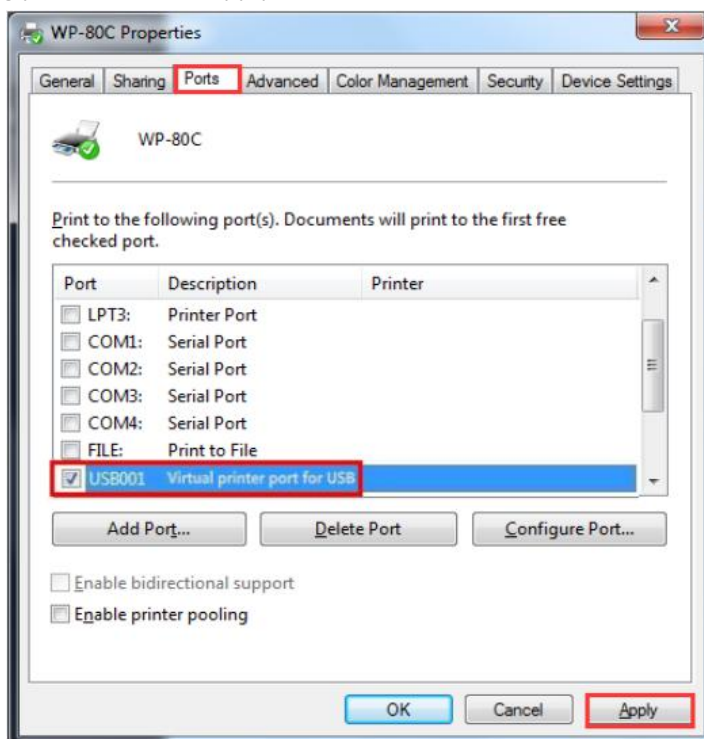
14、Click [Finish].



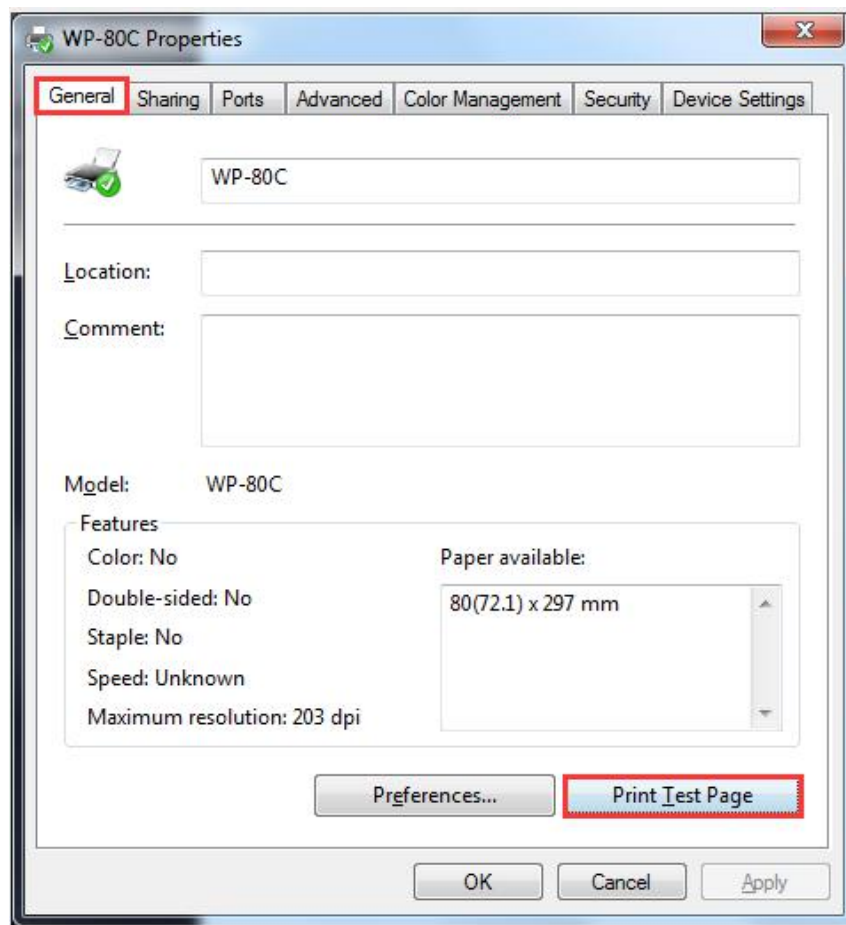
15、Click and chose printer properties.



16、Choose a corresponding port, then click [Apply].



17、Click [General], start testing and click [Print Test Page].



Once you could print test page, it means that driver installed successfully

Congratulations and thank you!